

Hinges

for aluminum profiles, with guide step

SPECIFICATION

Types

- Type **A**: exterior hinge wings
- Type **I**: interior hinge wings

Identification no.

- No. **C**: with countersunk holes

Aluminum **EL**

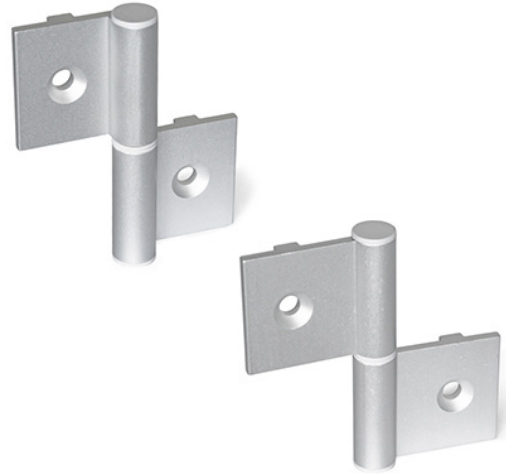
anodized, natural color

Bearing bushing / cover cap

- Plastic, Technopolymer (Polyamide PA)
- gray, RAL 7035

Tapered dowel pin ISO 8741

Steel zinc plated, blue passivated



INFORMATION

GN 2292 Hinges are made of drawn profiled aluminum and are used on doors and covers, for example. The guide step allows them to be quickly and easily mounted to all commercially available profile systems with a nominal size of 40 mm and groove width "n". Given the external hinge wing, type A hinges allow mounting with a very small door gap. The type I is fastened in the door gap. The mounting screws are therefore inaccessible and hence protected from vandalism when the door is closed.

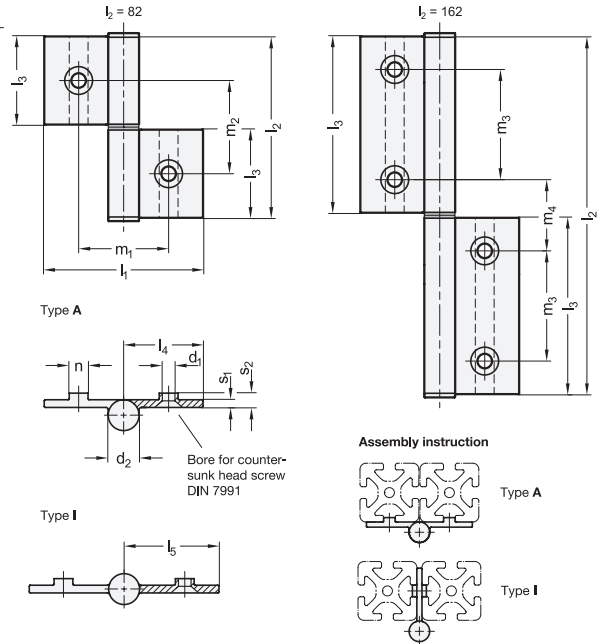
The hinges are delivered loose and must be mounted according to the accompanying instructions. Any hinge combination may be realized thanks to the modular design and available accessories.

TECHNICAL INFORMATION

- Plastic characteristics (see page A2)

ON REQUEST

- other lengths and hole spacings
- other finishes



GN 2292

Description	l1	l2	d1	d2	l3	l4	l5	m1	m2	m3	m4	n -0.3	s1	s2	⚖
GN 2292-72-82-A-C-EL	72	82	6.6	14	40	36	-	40.8	42	-	-	8	3.5	6.5	66
GN 2292-86-82-I-C-EL	86	82	6.6	14	40	-	43	55	42	-	-	8	3.5	6.5	69
GN 2292-72-162-A-C-EL	72	162	6.6	14	80	36	-	40.8	-	50	32	8	3.5	6.5	116
GN 2292-86-162-I-C-EL	86	162	6.6	14	80	-	43	55	-	50	32	8	3.5	6.5	122